

“AdvanceHE

Introduction to Advance HE

Sarah Murtagh – Partnership
Development Manager (Europe)



Who is Advance HE?

Who Are We?

Advance HE champion, enable, and inspire individuals, institutions, and the HE sector to help deliver world-leading outcomes. Our vision is that the world-class reputation and standing of HE is enhanced and recognised for transforming lives, enriching society, and developing the economy for the better.

We work to:

- + Transform HE leadership and governance for the new world
- + Enhance teaching and learning for student success
- + Drive organisational cultural change to support equality, diversity, inclusion and wellbeing

We work under 4 key pillars:

- + Governance
- + Teaching & Learning
- + Leadership
- + Equality, Diversity and Inclusion

Advance HE Membership



As Members you benefit from:

- Discounted or free access to training, events, and webinars
- Access to key membership projects
- Access to research and resources
- Ability to bid for grant funding to share practice and explore challenges
- Access to Advance HE Connect member areas
- Regular newsletters from Advance HE
- 50% Discount on direct application fees for Fellowship
- 10% Discount on consultancy
- 25% Discount on conferences and events
- Dedicated Advance HE support

Irish Members



Member Themes

Global Member Themes 24-25

- + Securing Student Outcomes
- + Designing Education for the Future
- + Protecting Inclusion in Times of Change
- + Governing & Leading Transformation



Securing Student Outcomes

Exclusive to Advance HE members

Aims to:

- + help you protect the quality of the student experience now
- + build on our work on the Student Success Frameworks and cover topics such as retention, attainment and graduate outcomes through a contemporary lens
- + provide a range of practical, evidence-based resources designed to support success.

 www.advance-he.ac.uk/student-outcomes



AdvanceHE

ESSENTIAL
FRAMEWORKS
FOR ENHANCING
**STUDENT
SUCCESS**

ENHANCING
ASSESSMENT IN
HIGHER EDUCATION

AdvanceHE

Webinar series: Using the Essential Frameworks for Enhancing Student Success

Enhancing Assessment

+ 4 December 2024 (Recorded)

Flexible Learning

+ 22 January 2025

Internationalising HE

+ 26 March 2025

Embedding Employability

+ 21 May 2025

Inclusive Learning and Teaching

+ 23 July 2025

Got an initiative you'd like to share at one of our webinars?

Contact
communications@advance-he.ac.uk with a brief description

 **Register Interest here**

Securing Student Outcomes - Outputs

Webinar: Establishing the conditions for student success - in conversation with Professor John McKendrick, Commissioner for Fair Access, Scotland

+ 18 November 2024, 17:15 – 18:15 (AWST), 20:15 – 21:15 (AEDT)

Using data and insight to drive improved outcomes for students

+ Two conversations sessions – 20th Feb

Securing student outcomes: showcasing institutional impact

+ Practical case study videos highlighting good practice in improving student retention and graduate outcomes – December 2024 (Recorded)

Employability and future skills: The alignment of provision with 'future-ready' skills

+ A series of screencasts discussing the role of AI on employability – January – March 2025

Securing Student Outcomes – Student service redesign

Recognising the importance of excellent student support, this strand will:

- + Explore new models for organising and delivering services
- + Investigate innovative approaches
- + Help you improve efficiencies in targeting interventions and coordinating support

Webinar: Securing Student Outcomes - Using the Student Needs Framework - HEIs session - Book now - 27 February 2025

Webinar: Securing Student Outcomes - Using the Student Needs Framework - Small and Specialist Institutions session - Book now - 26 March 2025

Designing Education for the Future

Exclusive to Advance HE members

- + This theme will provide a future-focused deep dive into dimensions of education of the future, through the lens of:
 - + Future strategy
 - + Future institutions
 - + Future partnerships
 - + Future pedagogy
 - + Future workforce



Designing Education for the Future - Outputs

Learning and teaching strategy in times of challenge and change

- + Bringing together senior leaders to discuss the value of a clear, focused and impactful learning and teaching strategy in a time of challenge and change – 13th February.

Making your learning and teaching strategy a reality

- + A series of professional perspectives on the key dos and don'ts in the development and implementation of learning and teaching strategies – dates TBC

Re-imagining higher education institutions

- + In-conversation sessions which bring you close to innovation and explore how different institutional models can help us re-think quality higher education of the future – dates TBC

Designing Education for the Future – Outputs cont...

Strategic partnerships for success and sustainability

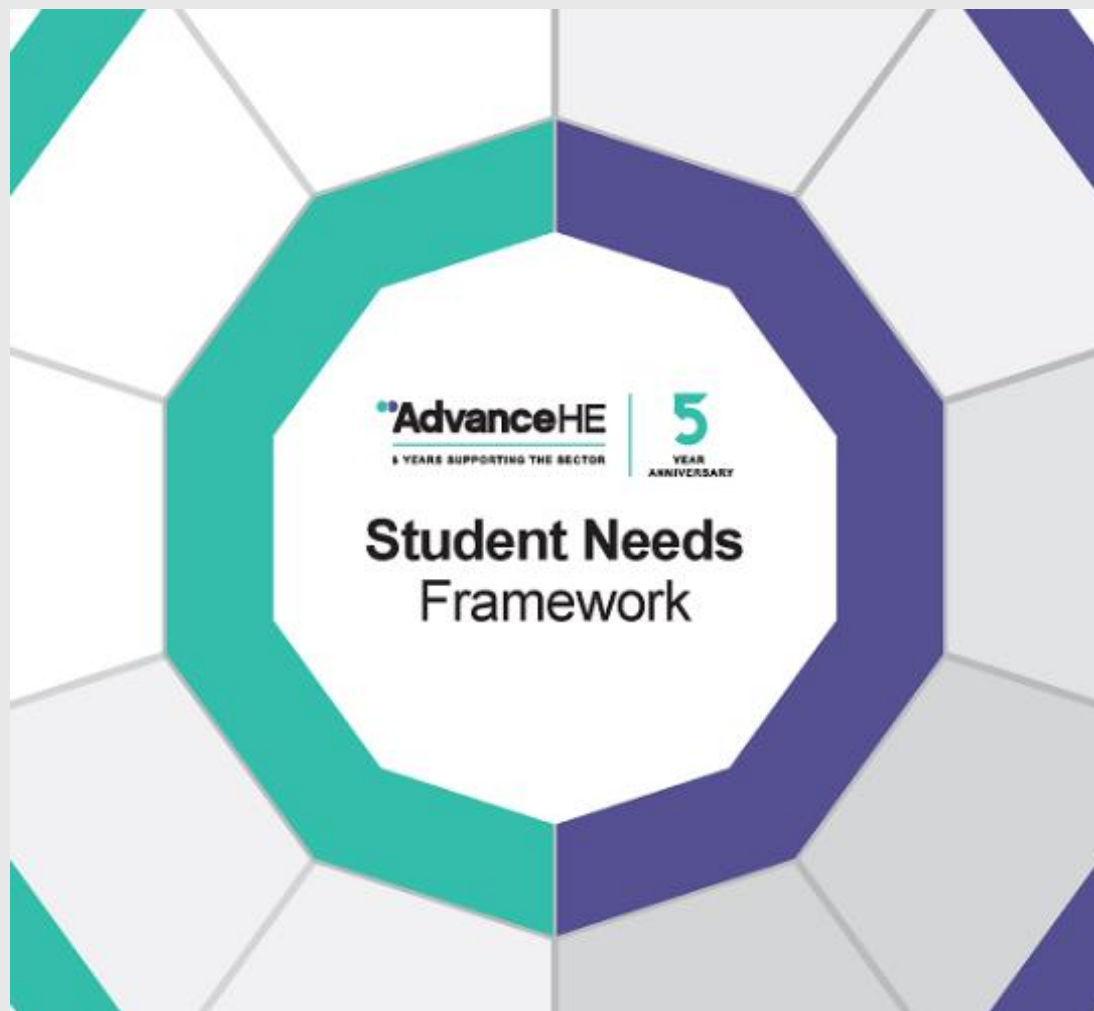
- + A webinar showcasing examples of how institutions have designed and are delivering international collaborations to widen access to study, grow income and bring value to communities.

Course Design for the 21st Century

- + Taking the form of published advice followed by a webinar, we'll be considering changing student needs, our ambitions to make higher education more accessible and the imperative to equip graduates for success over the arc of their careers.


AI Garage

- + We invite members to submit case studies of practice around generative AI to be entered into our database and published in our project report.



Protecting Inclusion in Times of Change

- + In recent years, the pressure that some students study and live under has created increasingly complex and challenging demands for support for students.
- + This member benefit theme will build on Advance HE's student needs framework to work with partners to investigate and propose new models for support services.

 Register interest in Protecting Inclusion in Times of Change [here](#)

Protecting Inclusion in Times of Change - Outputs

Disabled Student Commitment

- + The Disabled Student Commitment is working in partnership with sector stakeholders to develop and share guidance on competence standards and reasonable adjustments in higher education.

Gender based violence

- + This project will identify global trends and facilitate dialogue with international members on shared challenges and effective practices. Outputs will include a worked scenario and a global event.

+ **Wellbeing in Times of Change – 8th April (11-12.30)**

- + This interactive workshop examines how individuals can personally look at their resilience and empower well-being initiatives within institutions. It will provide:

Governing and Leading Transformation

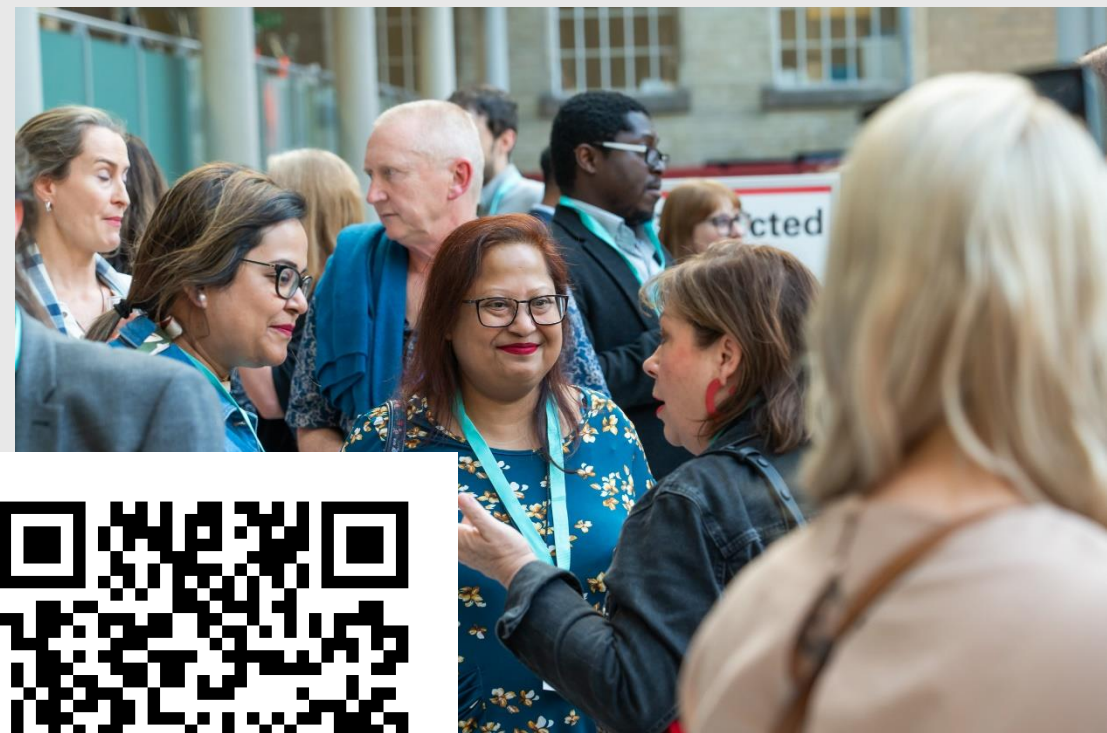
- + Whether driven by transition to new operating models, financial pressures or strategic change many leadership teams and governing bodies are entering a period in which delivering successful transformation will be a key focus.
- + Change and transformation is challenging, and it is difficult not to become overly focused on cost and service cutting as an approach to financial sustainability
- + This member benefits theme will **support colleagues from Heads of School to Executive teams and governors to succeed in their role of reshaping higher education.**



Enabling Impactful Change Workshops

- + Four stand-alone, online, co-creative workshops exploring challenges and discussing effective responses for those navigating change.
- + Aimed at academic leader and professional services colleagues who are driving and supporting strategic change in their areas.
- + As a member benefit it's included in your annual membership fee.

www.advance-he.ac.uk/enabling-impact



Fellowship

Recognition for those who teach or support learning in Higher Education

Fellowship

Fellowship demonstrates a personal and institutional commitment to professionalism in learning and teaching in higher education. Across four categories, from Associate to Principal, Fellowship provides individuals with recognition of their practice, impact and leadership of teaching and learning

The Professional Standards Framework for Teaching and Supporting Learning in HE (PSF)

- + Framework describing teaching and learning support in higher education
- + Describes what staff do, what they need to know and the values they hold
- + Describes four categories of Fellowship:
 - + Associate Fellow
 - + Fellow
 - + Senior Fellow
 - + Principal Fellow
- + Created in 2006; Revised in 2011 and 2023.

Four Categories of Fellowship

Associate Fellow (D1) AFHEA	Fellow (D2) FHEA	Senior Fellow (D3) SFHEA	Principal Fellow (D4) PFHEA
For those who have a more limited teaching or supporting learning role (e.g. librarians, lab technicians, learning technologists)	For those that have a substantial teaching or supporting learning role within Higher Education that can evidence all dimensions (e.g. lecturer)	For those with a comprehensive understanding which provides a basis from which they lead or influence those who teach or support learning	For highly experienced individuals whose practice involves a sustained record of effectiveness in strategic leadership of high-quality learning. Their impact is extensive.
The individual's personal practice activity <i>2 areas of activity</i> <i>K1, K2 and K3</i> <i>V1 and V3</i>	The individual's personal practice activity <i>All dimensions of practice</i>	The development, mentoring, influence & impact of & on others in learning & teaching <i>All dimensions of practice thoroughly demonstrated & use of this expertise to improve the practice of others / programmes.</i>	The demonstrable impact in learning and teaching activity by influencing policy and strategy. <i>A strategic leader of learning & teaching with impact across / beyond an institution.</i>

Why do staff apply?

- + Global Recognition
- + Opportunity to reflect and develop your practice
- + Supports promotion and continuing professional development
- + Allows use of postnominals after your name (e.g. Jane Smith SFHEA)
- + Reputational benefits individually and institutionally
- + Open's up global networking via Fellowship community



What do Institutions use it for?

- +Designing staff development programmes
- +Accrediting staff development programmes
- +Appraisal and Promotion
- +Reward
- +Self Assessment/Development



Additional Member Benefits

Connecting people: networks and communities

Advance HE Connect is an online network exclusively for the HE sector that has facilitated sector-wide engagement worldwide. Members have been connecting with more than **19,000 users** from **80+ countries** around the globe. This community platform is open to all those who work in HE and provides a space where the sector can share, connect and collaborate in one place.

In addition to the open networks, staff from member institutions benefit from **member only networks** such as the Connect Event Series Network, Fellowship Groups, and more.



connect.advance-he.ac.uk

+80%

Increase in users accessing Advance HE Connect as the sector moved to remote operations as a result of the Covid-19 crisis.

Publications, projects and resources

Membership provides institutions with access to a wealth of exclusive reports, publications and resources across key HE themes, and the latest thinking in leadership development, governance, organisation development, education and EDI. All accessed via the **Knowledge Hub**.

Student Success Framework Series



Programmes and Events

Advance HE provide open development programmes across a range of areas and are currently developing more programmes for use across the Irish sector.

Some examples of open programmes include:

- + Top Management Programme
 - + Aurora Women's Leadership Development Programme
 - + Senior Women's Leadership Development Programme (27th January – 13th May)
 - + Ireland Symposium (Maynooth University – 28th May)
 - + Fellowship Application Builder (3rd March -18th April 2025)
 - + GDP Ireland 2 (5th March)
- 

Subscribe to Newsletter

+ Our regular updates contain the latest news from Advance HE and from around the sector, plus links to articles sharing knowledge and good practice and information on our services and upcoming events.

<https://www.advance-he.ac.uk/newsletter-signup>



•AdvanceHE

More information

**Kate Weedy, Head of Partnerships
(Europe)**

Kate.weedy@advance-he.ie

advance-he.ac.uk

in X f @AdvanceHE

